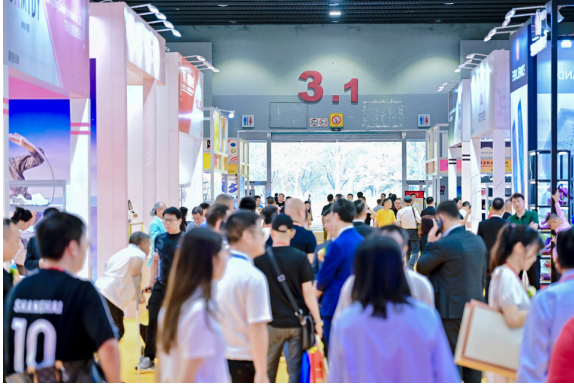




IFLE - Guangzhou

2024 POST SHOW REPORT

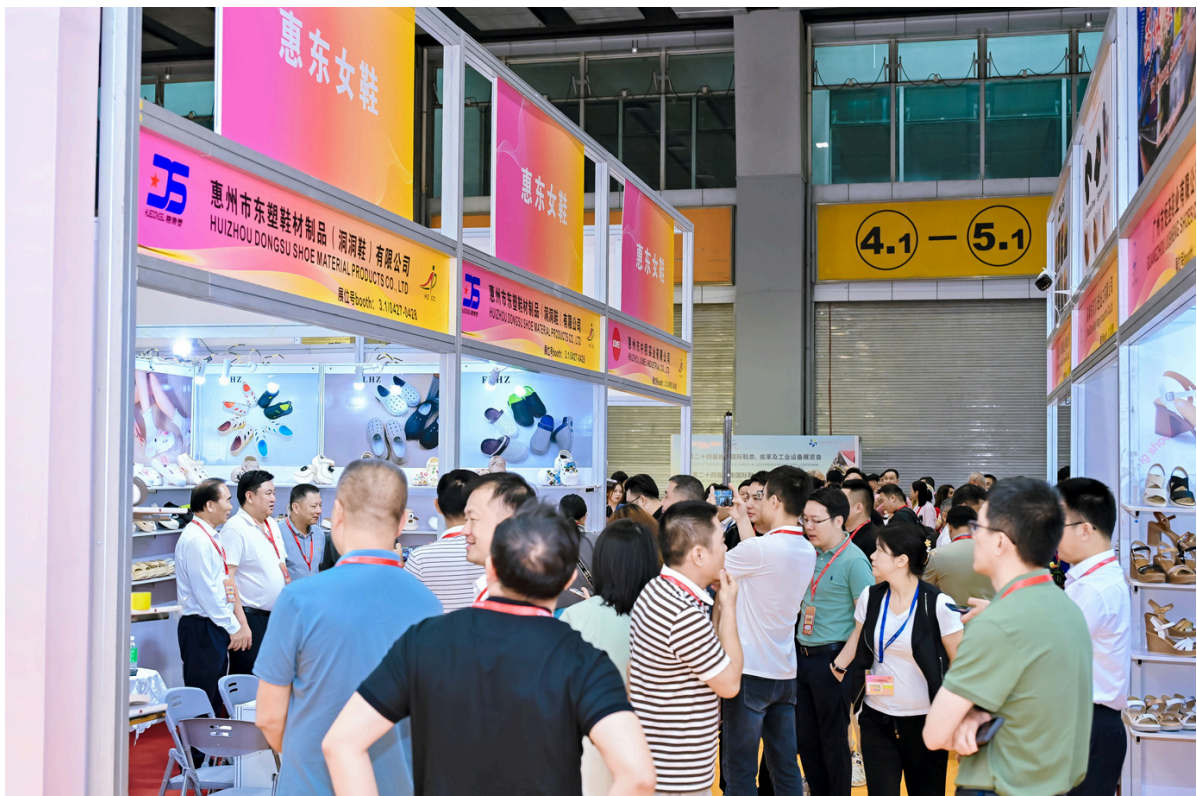
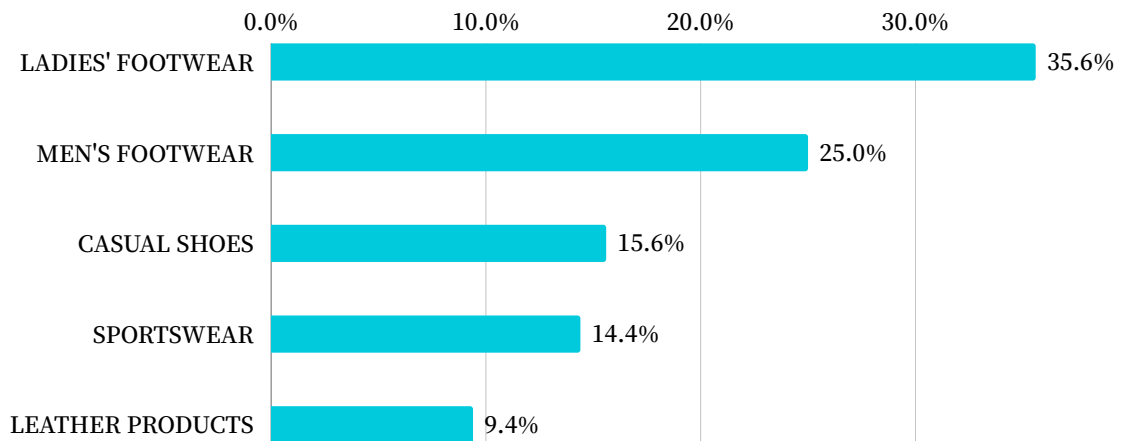
The "International Footwear Exhibition (IFLE) - Guangzhou" was successfully held on 29-31 May 2024 at the China Import and Export Fair Complex, Area A, providing visitors with a comprehensive overview of the market.



Exhibitor Analysis

The "International Footwear Exhibition (IFLE) - Guangzhou" provided a dedicated business exchange platform for professional buyers, focusing on the display of finished shoes and leather products. The exhibition covered a wide range of finished product categories, including women's shoes, men's shoes, leather goods, sports shoes, and casual shoes.

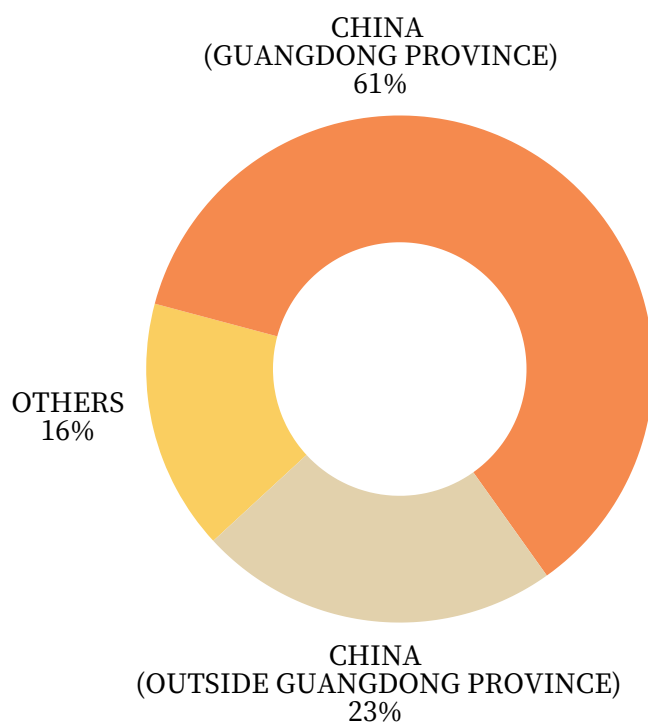
BY EXHIBIT PROFILE



Visitor Analysis

The "International Footwear Exhibition (IFLE) - Guangzhou" attracted a total of 6,300 attendees from 48 countries and regions, presenting a diverse range of exhibits to cater to the comprehensive preferences of both exhibitors and visitors.

BY COUNTRIES & REGIONS

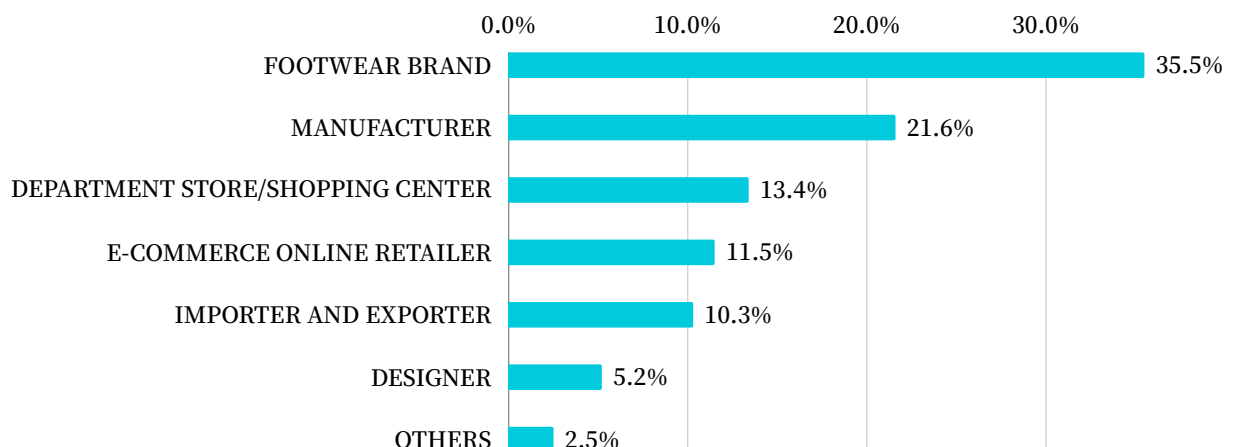


Note:

“Others” refers to:

Argentina, Armenia, Australia, Bangladesh, Brazil, Cambodia, Egypt, France, Germany, Hong Kong, India, Indonesia, Italy, Japan, Kazakhstan, Kenya, South Korea, Malaysia, Mexico, Mongolia, Morocco, Nepal, Nigeria, Pakistan, Peru, Philippines, Portugal, Russia, Saudi Arabia, Singapore, Slovakia, Slovenia, Spain, Thailand, Taiwan, Turkey, the United Arab Emirates, the United States, Uzbekistan, and Vietnam.

BY BUSINESS NATURE





International Footwear Exhibition (IFLE) - Guangzhou

**Canton Fair Complex • Area D
Hall 17.1 18.1 19.1 20.1**

Metro Line 8 • Xingangdong Station • Exit A

15-17.5.2025



ORGANIZERS

Top Repute Co.Ltd.
(852) 2851 8603
topreput@top-repute.com

Top Repute Co.Ltd.(Guangzhou)
(86-20) 8363 1061
toprepute@toprepute.com.cn

Guangzhou Footwear Association

**The Association of Guangdong
Shoes Manufacturers**

